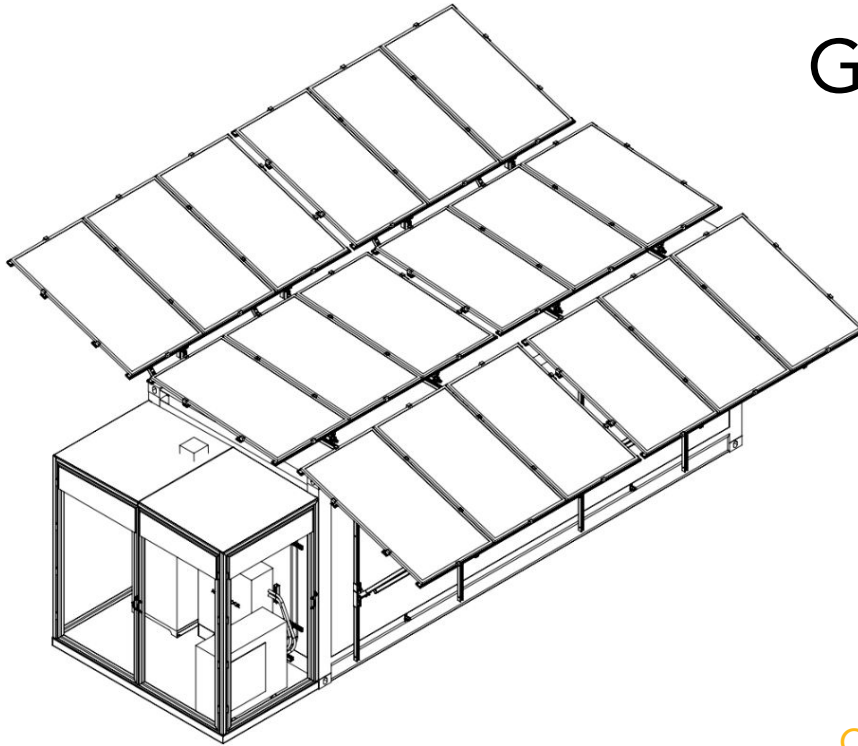






SPCS

Solar-Powered Cold Storage Unit

20 ft Cold Storage Series



Grid-Independent Solar-Powered Cold Storage

			Cooler (35 °F)	Freezer (0 °F)
Heterojunction Cell Technology		PV Production	7.2 kW ^a	7.2 kW ^a
Scroll Compressor		Cooling Capacity	14.6 BTU _h ^b	17.4 BTU _h ^c
LiFePO ₄ Battery Chemistry		Energy Storage	20 kWh ^d	31 kWh ^d
EasyWheel Aluminum Flooring		Cold Storage Space	142 ft ²	142 ft ²

Smart Features

- Remote monitoring and controls (option)
- Smart ventilation (Cooler option)
- Smart freeze-prevention (Cooler option)
- Video surveillance and security (option)
- Geographic adaptability from latitude 19°N to 41°N

^a Standard Test Conditions (STC): air mass AM1.5, irradiance 1000W/m², temperature 25°C

^b Test Conditions (TC): 90°F Ambient / 25°F Evaporator, 65°F return gas; 5°F subcooling; baseline, can be customized for location/climate

^c Test Conditions (TC): 90°F Ambient / -10°F Evaporator, 65°F return gas; 5°F subcooling; baseline, can be customized for location/climate

^d Baseline, can be customized for location/climate