

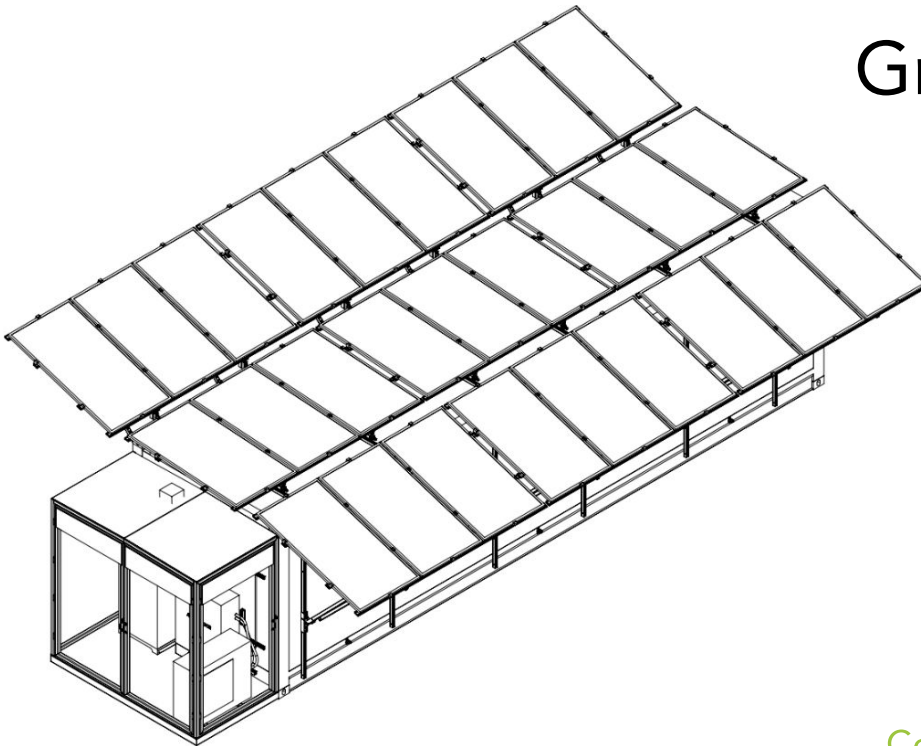
# SPCS

Solar-Powered Cold Storage Unit

30 ft Cold Storage Series



## Grid-Independent Solar-Powered Cold Storage



Heterojunction  
Cell  
Technology



PV Production

10.8 kW <sup>a</sup>

10.8 kW <sup>a</sup>

Scroll  
Compressor



Cooling Capacity

19.5 BTUh <sup>b</sup>

23.5 BTUh <sup>c</sup>

LiFePO<sub>4</sub>  
Battery  
Chemistry



Energy Storage

31 kWh <sup>d</sup>

41 kWh <sup>d</sup>

EasyWheel  
Aluminum  
Flooring



Cold Storage Space

204 ft<sup>2</sup>

204 ft<sup>2</sup>

### Smart Features

- Remote monitoring and controls (option)
- Smart ventilation (Cooler option)
- Smart freeze-prevention (Cooler option)
- Video surveillance and security (option)
- Geographic adaptability from latitude 19°N to 41°N

<sup>a</sup> Standard Test Conditions (STC): air mass AM1.5, irradiance 1000W/m<sup>2</sup>, temperature 25°C

<sup>b</sup> Test Conditions (TC): 90°F Ambient / 25°F Evaporator, 65°F return gas; 5°F subcooling; baseline, can be customized for location/climate

<sup>c</sup> Test Conditions (TC): 90°F Ambient / -10°F Evaporator, 65°F return gas; 5°F subcooling; baseline, can be customized for location/climate

<sup>d</sup> Baseline, can be customized for location/climate